

SCPOC Temecula Cruise

January 31, 2009 – 10:00am to ??????

Starting Point: Ralph's Supermarket
33145 Highway 79 South
Temecula, CA 92592

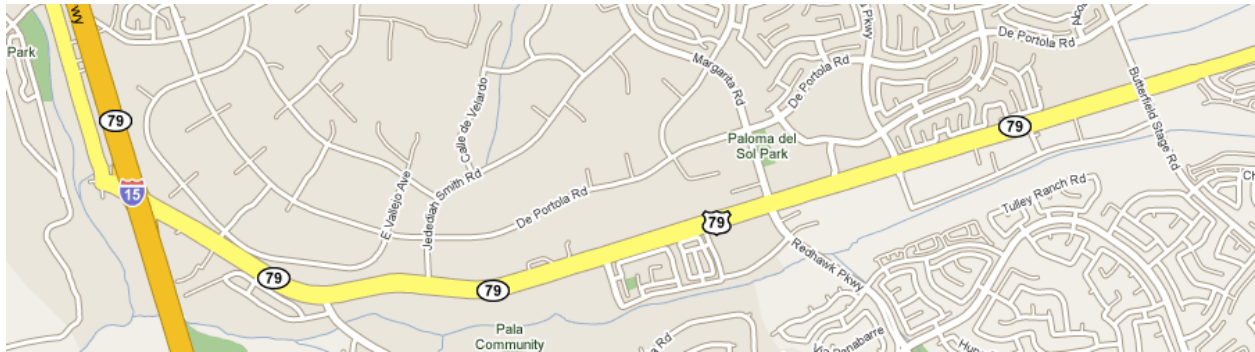
Ending Point: Outback Steakhouse
620 E. Hospitality Lane
San Bernardino, CA 92408

Thank you for joining us! We hope that you will enjoy your ride and have a fun time. Please read the directions below carefully. If you have any questions, please ask.

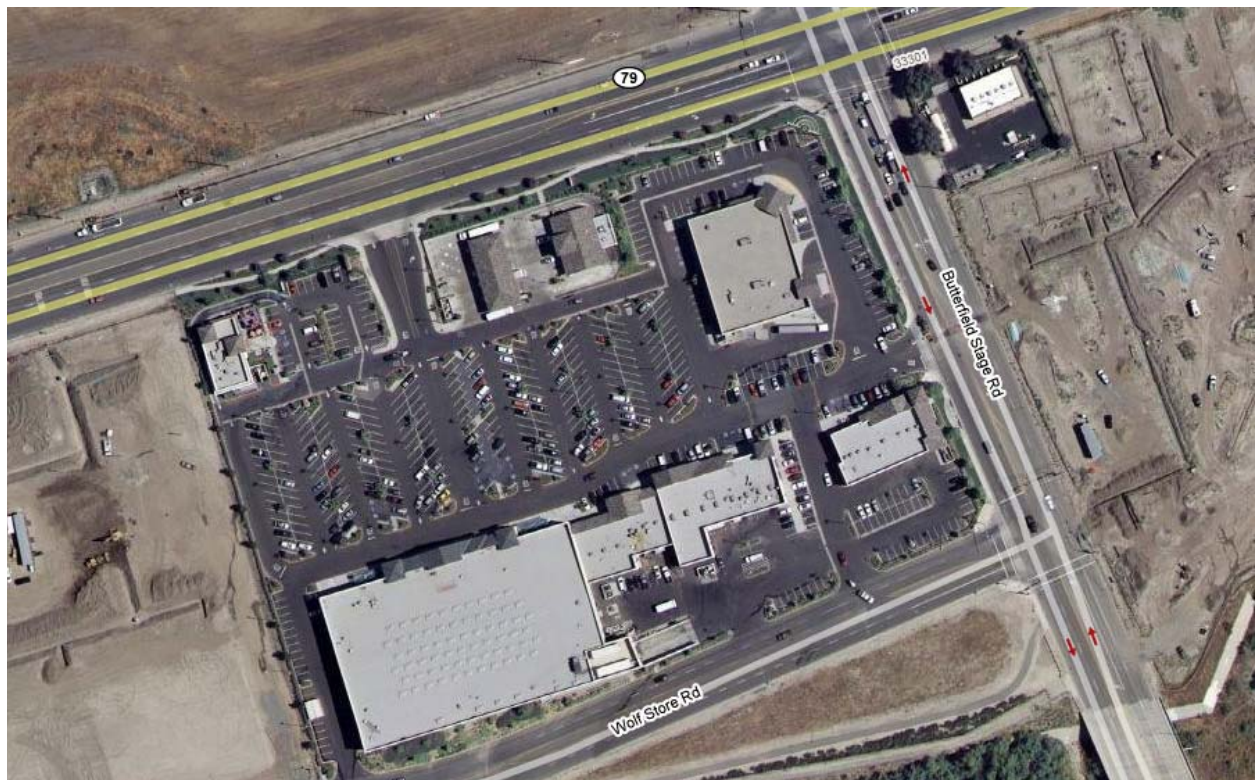
A few notes first:

- Make sure your car is in good repair. That means all tires are properly inflated and in good condition; that your car has no leaks or other mechanical problems.
- Have plenty of fuel. There will be few gas stops on this cruise, so please make sure that your tank is full before leaving.
- Have a small set of tools available in the event you must stop and make a roadside repair.
- Please be courteous on the road. This cruise is meant to be just that, a cruise. There are no 'points' or 'awards' on this cruise. At NO time should this be considered a race. **ANYONE DRIVING RECKLESSLY OR DANGEROUSLY WILL BE ASKED TO LEAVE THE GROUP.** There will be NO EXCEPTIONS.
- At NO time should anyone start driving carelessly. This can jeopardize the ENTIRE GROUP, not to mention that it is NOT SAFE and it can result in serious harm or injury to EVERYONE ON THE CRUISE. This point cannot be stressed enough.
- Everyone is encouraged to have an FRS radio WITH sub-channels. They are not that expensive and can be purchased at your local electronics store. We will be on channel 9, sub-channel 15.
- No excessive noise. This means please do not blast your radios so that all in the county can hear it. It also means no "throttle blips" or "rev dumps" when sitting in the parking lot, at a stop sign, or at a light. This draws unnecessary attention to the group.
- Please keep the FRS channel as clear as possible. We will be using FRS radios to communicate with one another. This is done so that we may keep track of ALL the drivers and in case any emergency situations develop. Excessive chatter can lead to an important message not being delivered.
- Do not use your cell phones while driving. Chances are most of us won't have much of a signal anyway, since we're going to be traveling into a few mountain areas. We need all drivers to concentrate on the ROAD because some of these roads have very sharp turns and you must have your wits about you at all times.
- If at any time, anyone needs to make a stop, please call out on the FRS radio or phone the group leader. We will try to accommodate your needs as much as possible.
- HAVE FUN! The main point of this drive is to have fun and we want everyone to enjoy themselves, regardless of the pace!

To reach Ralph's, from the I-15 (north or south), exit at the SR-79 South off-ramp and head east.



Continue along SR-79S until you reach Butterfield Stage Rd.

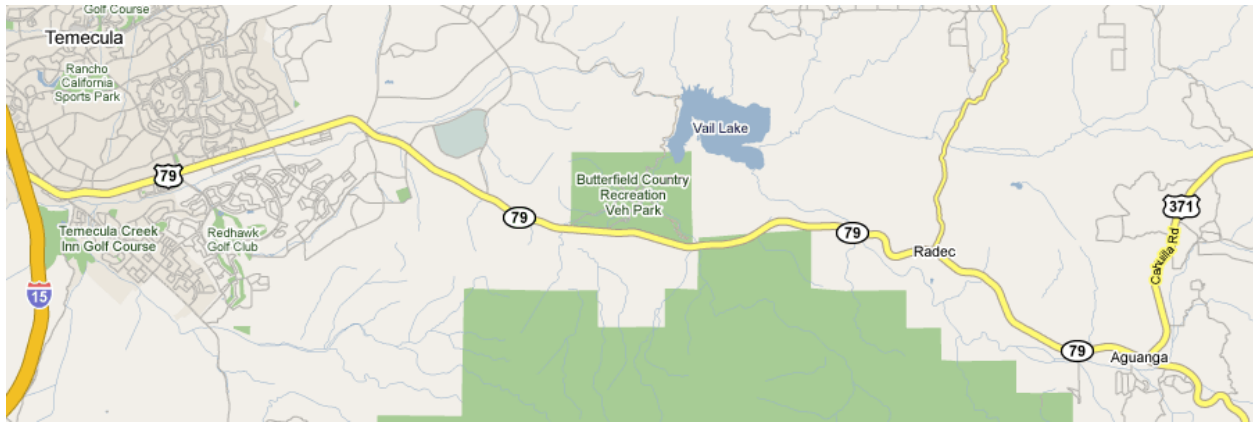


Here is the address to the starting point:

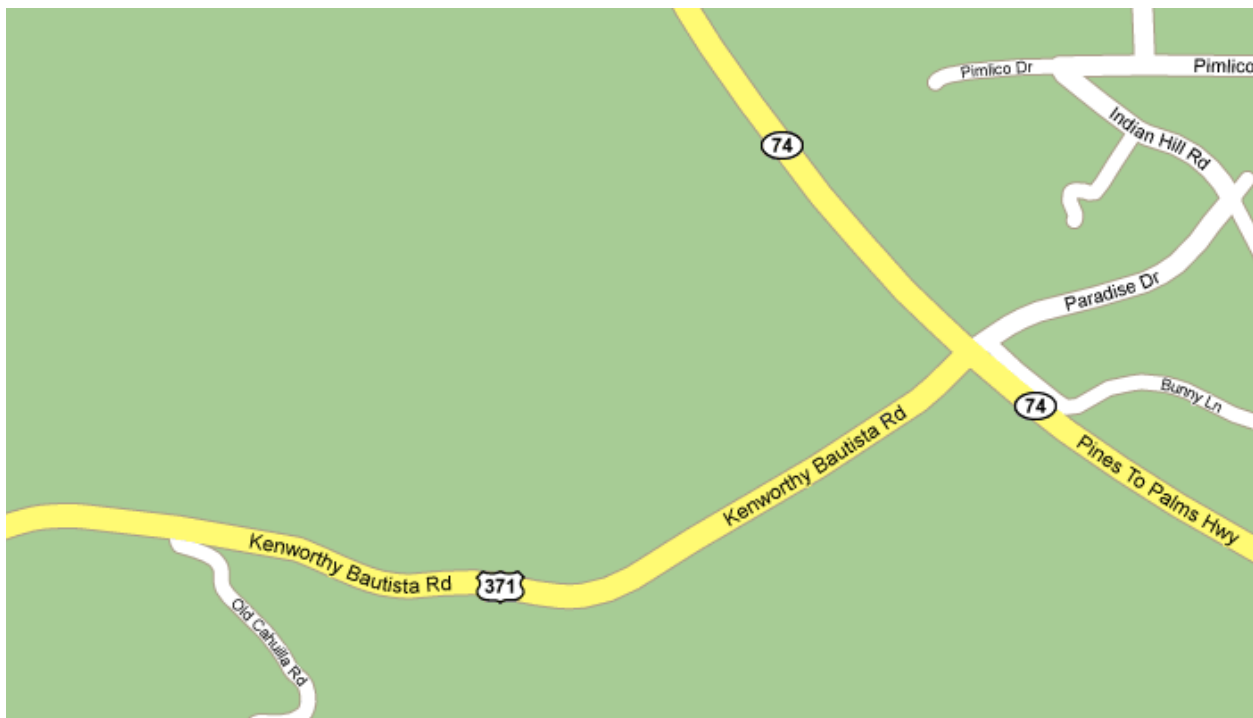
**Ralph's Supermarket
33145 Highway 79 South
Temecula, CA 92592**

We will stay at Ralph's until 10:30 am to 10:45 am. In the middle of the picture above, there is a Mobil gas station. You can splash off your tank or pick up a snack and/or drink for the trip. The drive will start from Ralph's parking lot immediately after everyone has arrived and fueled up.

When we depart, we will head east along SR-79 until we reach the junction with SR-371 (Cahuilla Rd.)



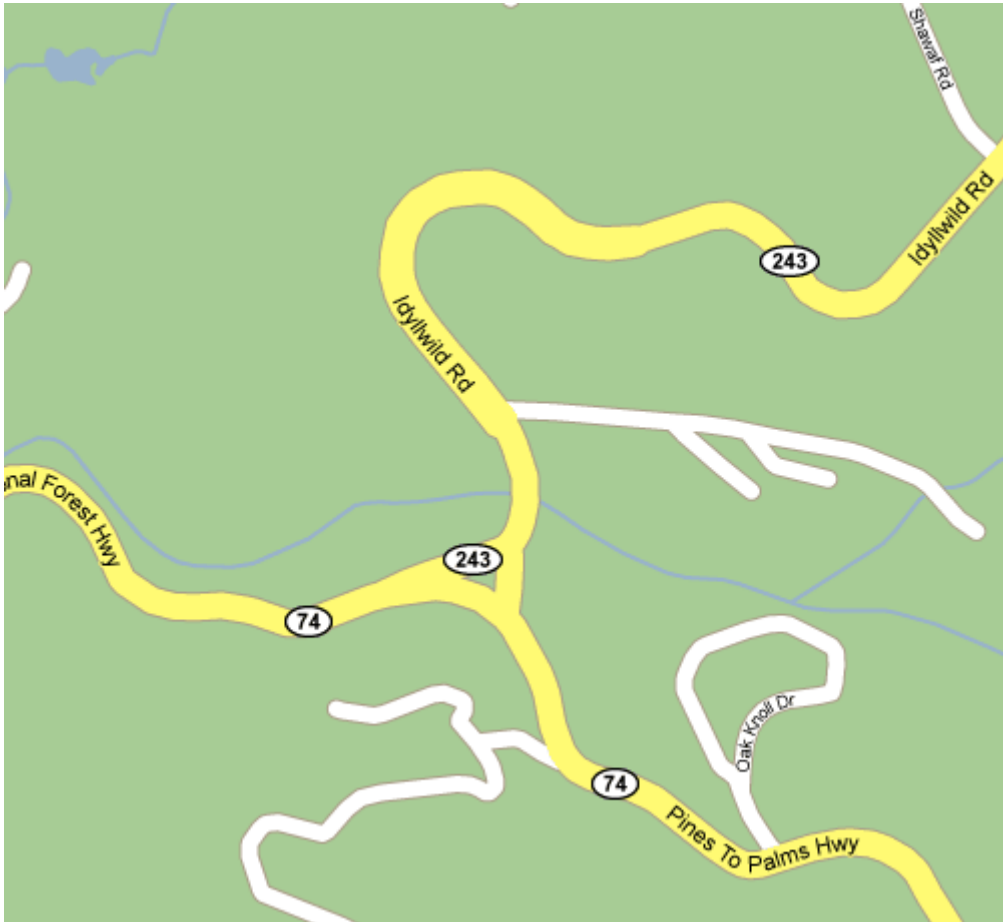
When we reach the split, we will travel along SR-371 until we reach the junction with SR-74 (Pines-to-Palms highway).



When we reach SR-74, we will turn left and head north along this highway toward Idyllwild.

During this time, you'll see a lot of trees and mountainside. There may or may not be snow in the area, but it will be cold, so we hope you brought a jacket along for the ride. If it's not cold, then go ahead and roll that window down; the scenery is great!

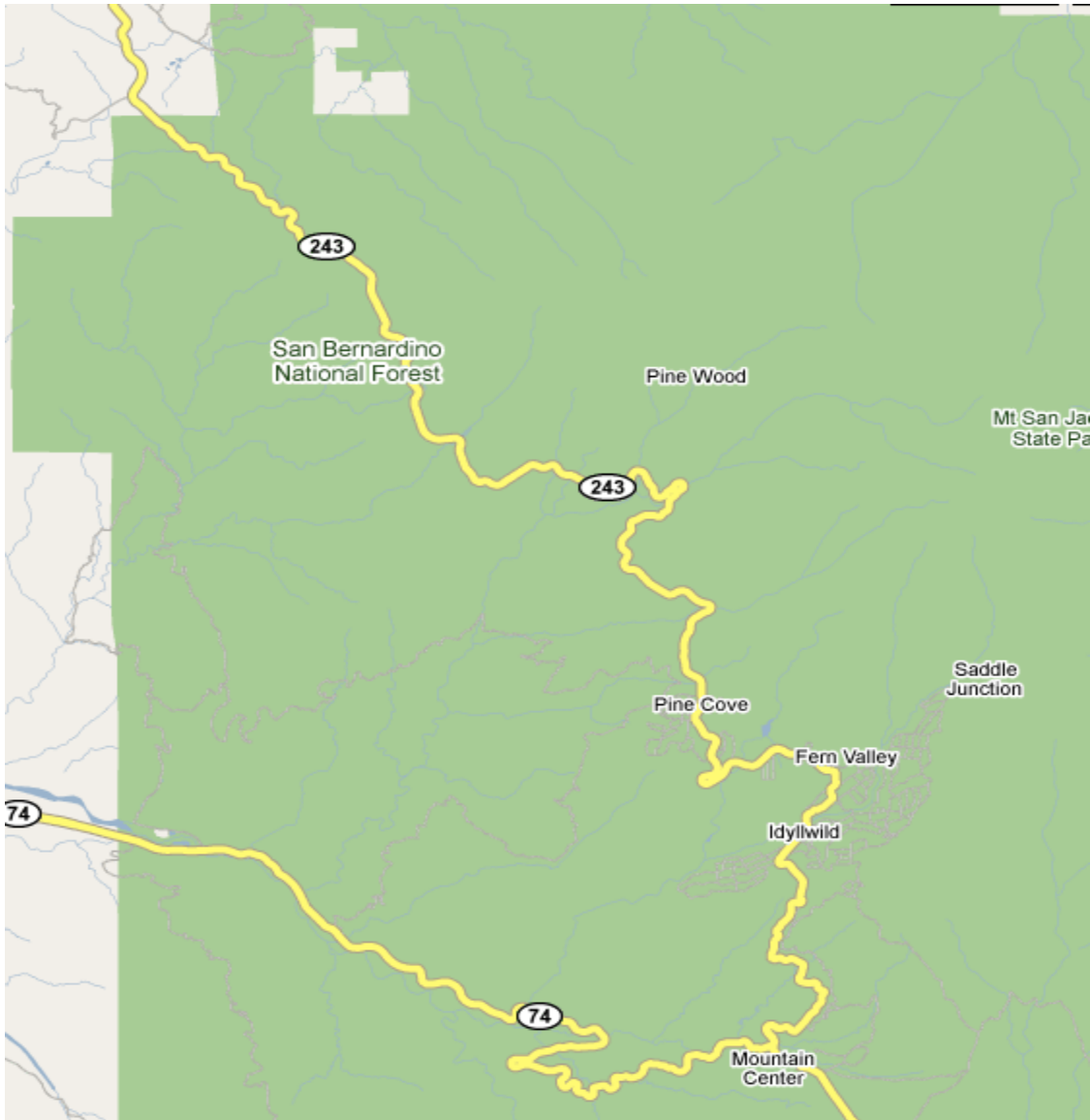
We'll keep along SR-74 until we reach the junction with SR-243 [Idyllwild Road], the highway that will take you through Idyllwild.



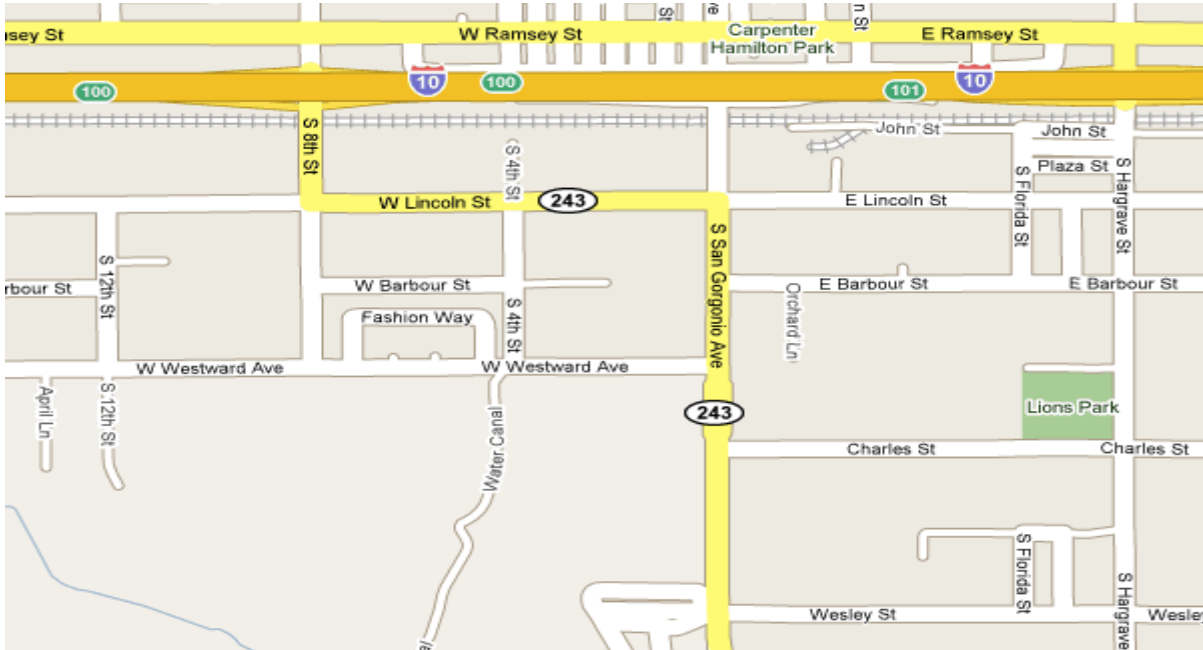
Here is a close-up of the turn. Make sure you turn right here, otherwise, you'll be lost!



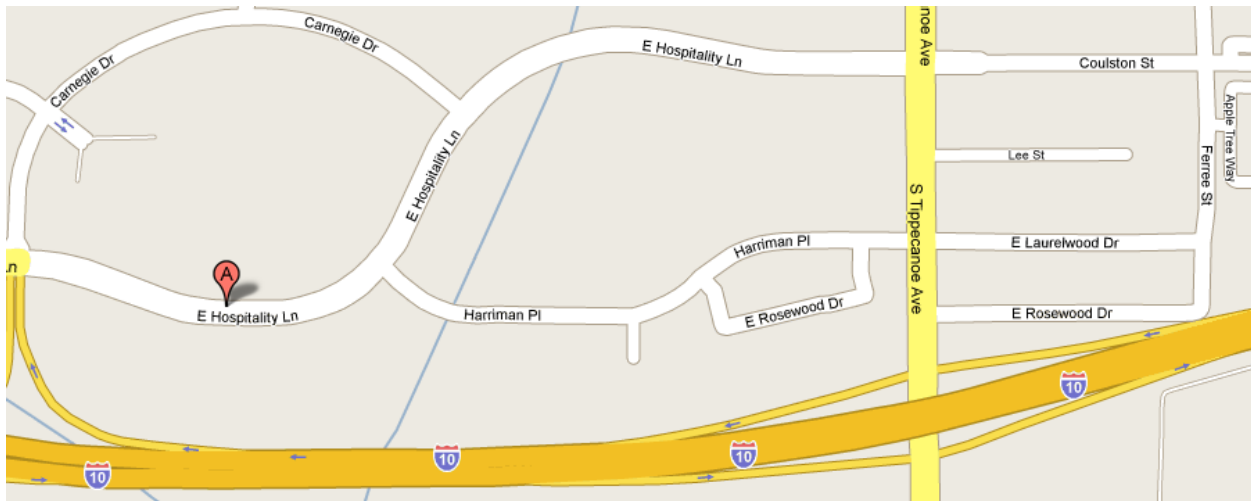
We'll travel through the mountains, into Idyllwild, Pine Cove and Banning.



When we reach civilization again, we'll continue along SR-243 until we reach Lincoln St. in the city of Banning. We'll be turning left on Lincoln, then right on 8th Street, where we will get onto the I-10 and head west.



We will travel west along I-10 until we reach San Bernardino.



We will exit on Tippecanoe Road, turning right, then we will turn immediately left on Hospitality Lane. We will turn right at:

**Outback Steakhouse
620 E. Hospitality Lane
San Bernardino, CA 92408**

We would like to thank you for joining us on this trip and we hope that you had a great time.